

BUILDING A RENEWABLE FUTURE

Our goal is to be leaders in the energy transition market and the contractor of choice for our clients. We have embraced Canada's low-carbon energy market and are investing in the renewable energy sector. We have a dedicated team focusing solely on the energy transition, from solar construction to carbon capture and storage and hydrogen energy infrastructure projects. With more companies building utility-scale solar energy projects in Canada, we offer our construction expertise in this infrastructure market.



We provide solar installations for North America's renewable energy sector.

You may recognize Surerus Murphy as a pipeline and facilities construction contractor with a track record of delivering complex projects to our clients - we are much more than this. We also service the renewable energy sector and have a niche expertise in utility scale solar installations.

Proven Track Record of Successful Solar Experience

We recently acquired WHC Energy Services, a USA-based energy infrastructure company that has a formidable presence delivering quality construction services in over 40 States and is gaining momentum in the solar installation sector. WHC, now called WHC - A Surerus Murphy Company, has delivered utility-scale project installations in America's heartland, from EPC services to construction and electrical hook-ups. These large-scale solar projects feed renewable energy into nearby transmission networks providing power to nearby communities and offsetting fossil fuel power generation needs. Surerus Murphy can offer our Canadian clients a unique skill set and experience based on a proven track record of successful completed projects across the border.



Past solar projects include:

Client	Project	Location	Size
NextEra	Chesapeake VA Solar	Chesapeake, VA	153MWdc
NextEra	Cereal City Solar	Battle Creek, MI	150MWdc
NextEra	Chaves County Solar II	Roswell, NM	40MWdc
Silicon Ranch	Hazlehurst Solar	Hazlehurst, GA	4MWdc
Silicon Ranch	Paris Solar	Puryear, TN	9MWdc
Arava Power	Sun Ray Solar	Uvalde, TX	272MWdc
Pine Gate	East Atmore	Atmore, AL	115MWdc

Solar Services Available in Canada

We can support complex solar and energy storage facilities by providing early contractor engagement and planning, construction and installation, reclamation, and restoration. Our established relationships with engineering partners enable us to provide full EPC services as well as pre-construction engineering, procurement, balance-of-plant, and the construction of solar and battery storage facilities.

- Civil – Road, Earthwork
- Piling & Racking
- Module Installation
- DC & AC Trenching / Cabling
- Equipment Installation
- Commissioning
- Battery Installation / Cable Termination
- Communications

Solar Project Highlight

Location: Knippa, Texas

Client: Arava Power

Project Details:

- 1870 acres
- 272MWdc, 200MWac
- 502,758 modules installed
- 68,553 piles installed
- Racking/tracker: Game Change Genius 1P
- 61 inverters
- Peak Manpower: 335 personnel

In July 2022, WHC was contracted by Arava Power to deliver full EPC services for the 272MWdc Sunray Solar Project. Most of the construction scope was self-performed including a portion of the pile installation, racking, module installation, civil works, DC and AC cable installation, equipment installation, and commissioning. Subcontracted services included installing the substation and transmission line connection, as well as fencing and a portion of the pile install.

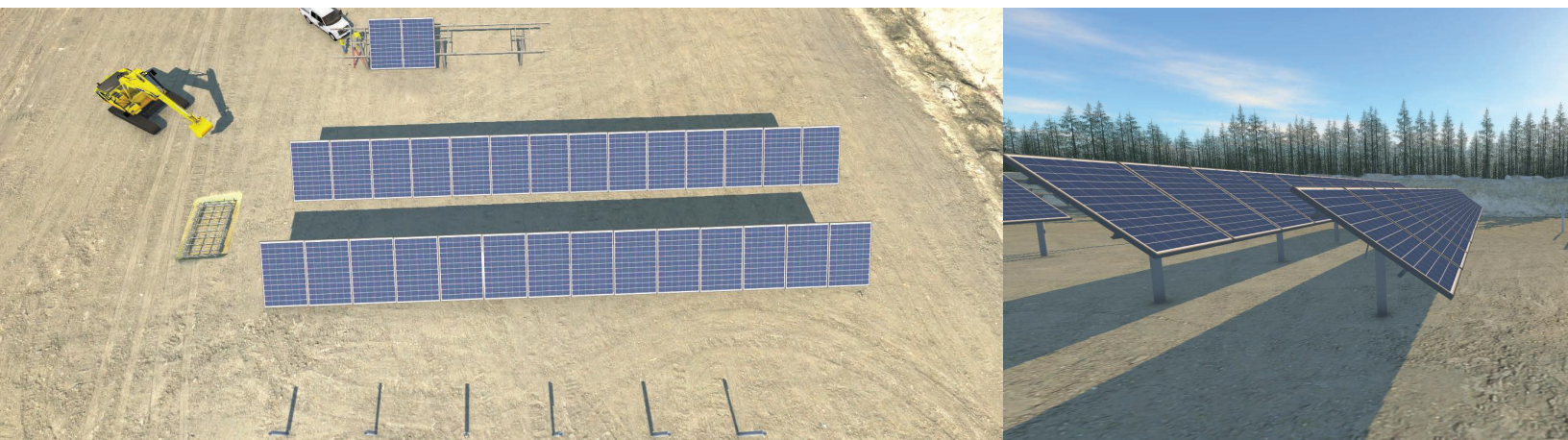


Surerus Murphy is at the forefront of utility scale solar project construction design and analysis offering a comprehensive suite of services that cater to the intricate demands of solar energy projects.

At the heart of our capabilities is a detailed site suitability analysis, ensuring optimal location selection and available land usage based on environmental, geographical, and regulatory considerations. Our expertise extends to civil earthworks and land grading analysis, where we meticulously plan and execute land preparation to meet the specific requirements of each project. During site analysis, we integrate our findings to develop efficient, sustainable, and cost-effective projects, tailored to the unique characteristics of each site.

A critical aspect of our service offering is solar array placement and shadow casting analysis, where we use cutting-edge technology to model solar exposure, mitigate shading losses, and maximize potential energy yield. This process is complemented by our estimated yield assessment service, where we evaluate the potential energy output of the project using advanced simulation tools. Pile layout design is another area of our expertise, where we ensure the structural integrity and stability of solar arrays through precise positioning and engineering.

To bring our designs to life, we employ sophisticated 3D modelling and visualization techniques, allowing clients and stakeholders to fully understand the scope and detail of proposed solar projects in a real-world context. This not only aids in planning and development but also facilitates stakeholder engagement and project permitting and approval processes. Together, these capabilities enable us to deliver high-quality, efficient, and sustainable solar projects from conception through to completion.



The Surerus Murphy Advantage

We are small enough to care and large enough to successfully deliver billion-dollar projects. Our values-based culture guides how we treat our people, clients, communities, and surroundings. We work respectfully and responsibly, doing our part to embrace innovation, technology, and the energy transition, and this includes limiting our own footprint while supporting our clients in their journey to net-zero emissions.

We are proud members of Solar Alberta, as well as the Canadian Renewable Energy Association.

We are committed to meaningful engagement.

Surerus Murphy is committed to collaboration and building long-term, mutually beneficial relationships that are based on transparency, respect, and trust. When we work with Indigenous partners, we engage frequently and embrace an inclusive approach that encourages Indigenous partners to participate in decisions that directly affects their livelihoods, families, and traditional territories. Being a good neighbor and responsible corporate citizen is who we are.

